

North American Mystere 4.3 Class Association

Constitution

This is the Constitution/Bylaws (March 2002) of the North American Mystere 4.3 Class Association.

- 1) Name:
 - a) The name of the Association shall be the North American Mystere 4.3 Class Association.
- 2) Objective:
 - a) To provide a medium of exchange of information among Mystere 4.3 sailors and to enhance the enjoyment of these sailboats.
 - b) To promote and develop Mystere 4.3 class racing under uniform rules.
 - c) To maintain the one design characteristics of the Mystere 4.3 sailboat.
- 3) Membership:
 - a) Membership is open to those who: own a North American Mystere 4.3, and have a current membership application on file with the NAM4.3CA, and have paid any NAM4.3CA dues for the current year
 - b) Members are entitled to one vote either in person, by absentee vote, or by proxy.
 - c) Members must inform the secretary in advance, via e-mail or in writing, of any vote if they intend to cast by absentee or proxy.
 - d) Only NAM4.3CA members shall be entitled to compete in class-sanctioned events.
 - e) Only NAM4.3CA members shall be entitled to vote on NAM4.3CA issues, or hold office.
 - f) Membership is for one (1) fiscal year (Nov 15 -Nov 14) , and dues shall be set for the next year at the previous annual meeting by a simple vote. If there is no quorum to vote, dues shall remain the same as the prior year's level. Only Mystere 4.3 owners may hold office or be on the rules committee.
 - g) Dues are initially set at \$0/year. (2002)
- 4) Meetings:
 - a) At least one annual meeting shall be held on the first night of the US Nationals. In the absence of a US Nationals, the meeting will be held at the discretion of the class president.
 - i) Special meetings may be held from time to time and can be done electronically with 15 days notice (web site posting).
 - ii) Officer meetings may take place from time to time for the purpose of discussing class business and establishing class policy.
 - b) Quorum: Shall consist of at least 50 percent of membership including any absentee ballots or proxy votes.
 - i) If no quorum is present, a meeting for the purpose of informing the present membership may take place, with no "Official" business being conducted.
 - ii) Absentee ballots must be in the possession of the secretary by the beginning of the meeting.
 - c) Order of Business: The order of business at the class meeting shall be as follows:
 - i) Sign in.

- ii) Minutes.
 - iii) Officer reports.
 - iv) Committee reports.
 - v) Old business.
 - vi) Elections.
 - vii) New Business.
 - (1) New motions.
 - (2) Vote on rule or bylaw changes.
 - viii) Adjournment.
- d) The officers and rules committee members shall be elected by majority vote at the annual meeting, including absentee ballots and proxy votes. The new positions shall take effect with the introduction of " New Business" during the annual meeting.
- i) If no quorum, the existing president may make appointments.
- 5) Officers:
- a) The officers of this club shall consist of:
 - i) President
 - (1) Preside at all general meetings.
 - (2) Oversee the activities of the other officers and committees.
 - (3) In the case a position becomes vacant, may appoint a substitute until the next scheduled election for that position.
 - (4) Create and make appointments to committees. All newly created committees must have:
 - (a) A specific purpose.
 - (b) Report its finding to the officers by the annual meeting.
 - (c) Must have an end date upon creation.
 - (5) Holds club elections and votes (except rules committee activities).
 - (6) Decide on NAM4.3CA event locations and dates (2 member committee vote).
 - ii) Vice President/Rules Chairman
 - (1) Shall promote the class.
 - (2) Shall substitute for the President if unavailable.
 - (3) Interface with the factory and report back to the class any relevant information.
 - (4) Decide on NAM4.3CA event locations and dates (2 member committee vote).
 - (5) Be responsible for keeping the class rules current and organize any proposed rule changes.
 - (6) Act as a single voice of the rules committee to the officers and membership, except where noted.
 - (7) To call and preside over the rules committee meeting. (Must have two of the three members in attendance with the third having been notified).
 - (8) Monitor class rules and recommend changes to the committee (see 6.b.1.).
 - (9) Issue and track sail numbers.
 - (10) Decide location of national and international events (rules committee vote).
 - (11) Authorize the Notice of Regattas (NORs) and approve the Sailing Instructions (SIs) for the NAM4.3CA events.
 - (12) Assist the measurer in certifying class equipment.
 - (13) Vote on whether to submit a rule change to the class (rules committee

vote).

iii) Secretary/Treasurer

- (1) Be responsible for the class minutes.
 - (2) Maintain class membership information.
 - (3) Maintain class records.
 - (4) Receive class membership receipts and transfer them to the Treasurer.
 - (5) Determine the class mailing address.
 - (6) Is in charge of any class mailings and web site postings and membership notifications.
 - (7) Assigns fleet numbers to any group of Mystere 4.3 owners who request it.
 - (8) Be informed all absentee ballots or proxy votes prior to the vote by the issuing member.
 - (9) Have custody of all class funds and make payments as necessary, on behalf of the class.
 - (10) Submit a complete annual financial statement to the class no later than January 31 of the following year.
 - (11) Provide periodic financial updates to the officers.
 - (12) File all required financial paperwork on a timely basis.
 - (13) Be responsible for the legal issues.
 - (14) Prepare an annual budget.
- b) The term of office shall be two (2) year terms and officers shall be eligible for reelection. Elections shall be held on even numbered years.
- c) Any officer may be removed from office by a majority vote of the balance of officers and rules committee membership for willful and unjustified gross act detrimental to the NAM4.3CA or its membership.
- d) Vacancy of any officer or committee member shall be filled, by appointment, by the president, for the balance of that position's term.
- e) Committees
- i) Rules committee - Shall consist of a Vice-President/Rules chairman, Chief measurer, and an Event coordinator.
 - (1) The purpose of this committee:
 - (a) Is to monitor the class rules.
 - (b) Propose rule changes to the membership, as they feel necessary.
 - (c) Solicit national and international event locations.
 - (d) Make temporary rule changes as the situation arises.
 - (2) Job Descriptions
 - (a) Rules Chairman (see above)
 - (b) The Chief measurer shall serve as the class measurer. The measurer is responsible for:
 - (i) Certify class equipment.
 - (ii) Keep all class measurement information.
 - (iii) Handle equipment violations i.a.w. RRS.
 - (iv) Enforce the class rules.
 - (v) Answer questions and challenges relating to the measurement rules.
 - (vi) Issue interpretations, which shall be binding until approved or rejected by the rules committee.

- (vii) Keep the rules committee apprised of any "gray areas" or other rules issues as they arise.
 - (viii) Vote on whether to submit a rule change to the class.
 - (3) The Event Coordinator is responsible for:
 - (a) Receive or solicit petitions for class national and international events.
 - (b) Present to the rules committee, on a timely basis, all locations under consideration for any NAM4.3CA event.
 - (c) Vote on whether to submit a rule change to the class.
 - (4) Terms:
 - (a) Rules Chairman - See above
 - (b) Measurer
 - (i) 4 year term starting 2002
 - (c) Event Coordinator
 - (i) 4 year term starting 2004
 - (d) Any rules committee member may be removed from office by a majority vote of the officers and balance of rules committee membership for willful and unjustified gross act detrimental to the NAM4.3CA or its membership.
 - ii) Nominating committee
 - (1) The Purpose of this committee shall be to receive or solicit nominations for officer and committee member positions.
 - (2) Is appointed by the president at the previous election.
 - (3) May consist of up to three (3) people.
 - (4) Shall create the ballot for vote.
 - iii) Any other committee that may be necessary. (see above)
- 6) Amendments:
- a) Changes to the bylaws:
 - i) May be made at any regular or special meeting, providing there is a quorum, by a two-thirds vote of the membership present including absentee ballots or proxy votes.
 - ii) Proposed changes must have been presented to the organization (via web site posting) at least 30 days prior to the vote and must be seconded by at least 5% of current members.
 - iii) Become effective during the "New Business" section of the current meeting, unless specified in the motion.
 - b) Changes to the class rules:
 - i) Proposed permanent rule changes shall be submitted, by any member to the Rules Chairperson, for consideration at least 30 days prior to the annual meeting. Upon consideration of the change, the rules committee may either:
 - (1) Recommend the change.
 - (2) Reject the proposed change.
 - (3) Modify the proposed change.
 - ii) Upon b.i.1 or b.i.3 above,
 - (1) A Web site posting shall occur stating the proposed change, at least 15 days prior to the meeting.
 - (2) A "YES" vote by a two-thirds votes of the membership present, providing there is a quorum, including absentee ballots and proxy votes at the annual meeting shall be sufficient to change the class rule.

(3) To take effect on March 1st of the following year.

- 7) Dissolution - Should, for whatever reason, the organization need to be dissolved:
 - a) A special meeting shall be held expressly for that reason.
 - b) The meeting shall be announced 30 days prior, to all current members via email, telephone, mail, or other reliable mechanism.
 - c) Consent of at least two-thirds of current members including absentee ballots and proxy voting to dissolve.
 - d) After payments of all club debts, club shall donate all its assets to (in order):
 - i) Newly formed club such most closely represents this body as decided by majority of members present.
 - ii) Charitable organization for the benefit of promoting sailing as selected by the outgoing officers.

Class Rules for the North American Mystere 4.3 Class Association:

Spring 2002

2002 North American Mystere 4.3 Class Rules -Final Draft

1. Objective
 - 1.1. Define configuration of Mystere 4.3 catamaran for one-design racing in North America.
 - 1.2. Define baseline configuration of Mystere 4.3 catamaran for Portsmouth Handicap racing in North America.
2. Intent
 - 2.1. Promote Fair and Fun racing.
 - 2.2. Maintain the boat's safety features.
 - 2.3. Keep boat performance equal.
 - 2.4. Have the boat appeal to a wide audience.
 - 2.5. Preserve and enhance the boat's rigging and sailing simplicity.
 - 2.6. Allow customization to accommodate varying sailing styles and crews.
 - 2.7. Allow design evolution from the manufacturer to ensure commercial viability.
 - 2.8. Minimize cost of maintaining a competitive boat by preventing a technology race and permitting purchase of components from competing suppliers.
 - 2.9. Encourage the use of racing tactics and sailing skills.
3. One-Design Class Racing

The design and development of the Mystere 4.3 is directed toward a one-design class where the race is between sailors and sailing skill, not boats. Any alterations to the hull form, construction, equipment or spars as supplied by the builder except as is specifically authorized by these rules, are a breach of these rules and are prohibited.
4. Spirit/Rationale

The intent and objectives of these rules are sometimes contradictory. Permitting changes that allow the boat to appeal to a broad audience reduces the boats equality. For example, adding an additional cleat to hold the spinnaker sheet helps a singlehanded crew manage the boat, but that advantage translates into better performance than other boats and more cost. The challenge is to balance these various goals as best we can. So, the spirit of these rules can be summarized by:: If it doesn't do anything but make the boat faster, NO. If it makes cheaper and safer and easier, YES

In particular, these guidelines lay the foundation:

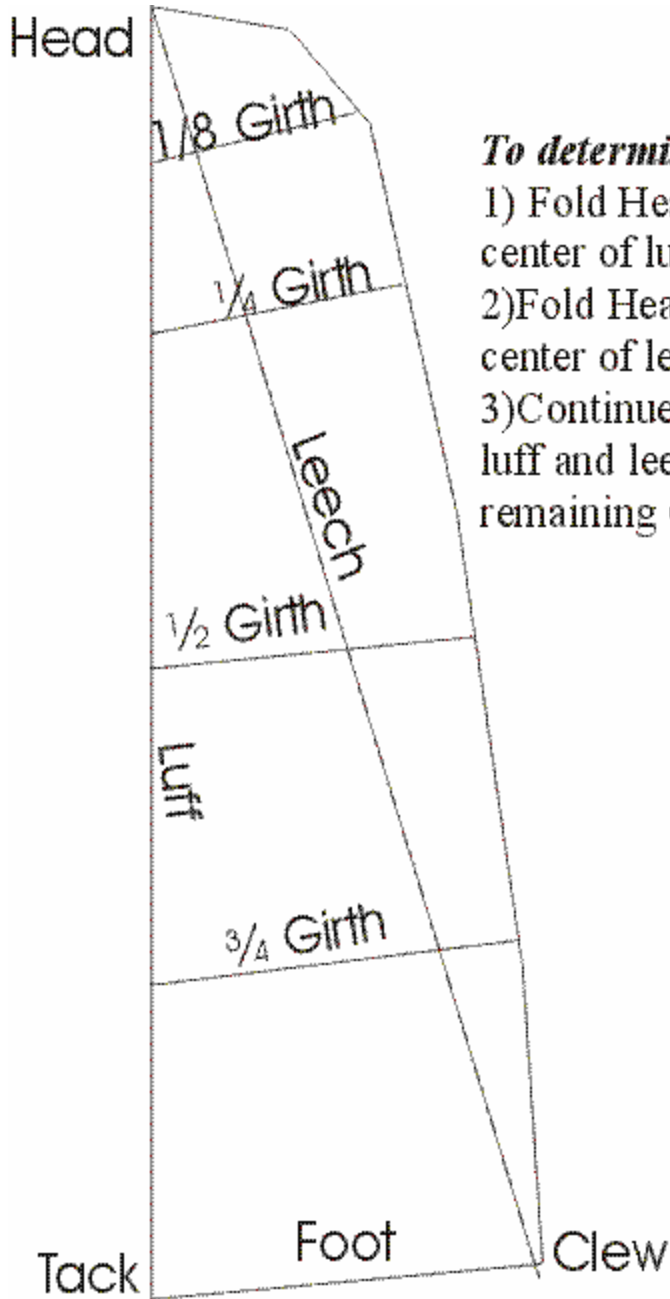
 - Overall dimensions standardized.
 - Changes to the underwater form Disallowed.
 - Sail size (but not much else about them) standardized.
 - Convenience Items Allowed.
 - Changes to the existing controls Allowed.
 - Addition of new controls Disallowed.
5. Definitions
 - 5.1. The North American Mystere 4.3 Class Association shall hereafter be referred to as NAM4.3CA.
 - 5.2. Mystere International and any of their licensees that are in good standing with respected licensors shall hereafter be referred to as Mystere.
 - 5.3. International Sailing Federation shall be referred to as the ISAF.

- 5.4. The International Sailing Federation Racing Rules shall be referred to as the RRS.
6. Eligibility
The NAM4.3CA has the right to declare ineligible any Mystere 4.3 which does not conform to the spirit, objective and intent, as well as the letter of these rules and official drawing and specifications held by the NAM4.3CA. In the event the drawings are not held by the NAM4.3CA, they shall be held by Mystere
7. Deviations
If you are in doubt, check with the NAM4.3CA first. Approval must be in writing by the Rules Chairman or his designee.
8. Design Features and Changes
Only Mystere 4.3s manufactured by Mystere are legal for class racing. Nothing may be changed or removed from any Mystere 4.3 that will in any way alter the structural integrity, design function, or built-in safety features of the boat. Changes that fall under the category of safety and strength shall have prior written approval. Approved changes are as follows: Stronger gudgeons, larger diameter wires , slight shimming of crossbars, and reinforcing not affecting water flow. Except as allowed in these rules, any changes or additions that in any way can be construed as speed devices are not class legal.
9. Safety Equipment
- 9.1. Each person on board shall carry a lifesaving device or PFD (Personal Flotation Device) approved by the recognized authority having jurisdiction. NAM4.3CA recommends that life jackets or PFDs be worn at all times.
- 9.2. Boat shall conform to all equipment and registration regulations of governing body having jurisdiction.
- 9.3. A righting line or webbing consisting of at least one 13 foot length of line or webbing, or two 7 foot lengths of line or webbing shall be securely attached to the boat and readily available on either side of the boat.
(Righting water bags, shroud lengthening devices, righting- pole type devices, mast head floats, and righting systems other than the minimum system specified may be carried and shall be used for righting purposes only).
10. Hulls and Decks must be as supplied by Mystere except that:
- 10.1. Hulls may be rubbed, waxed, sanded, built back up to original spec, or buffed in the normal process of maintenance.
- 10.2. A maximum of 2 inspection hatches per hull is class legal.
- 10.3.
11. Rudders, Rudder Assemblies, Tiller Arms and Tiller Crossbar
- 11.1. Rudder castings shall not be modified except for minimum filing and filling to improve fit and function and reduce wear on the rudder blade.
- 11.2. Mystere supplied rudder castings may be trimmed at the bottom so as not to extend below the transom.
- 11.3. Only rudder blades manufactured by Mystere for the 4.3 catamaran may be used.
- 11.4. Shims may be installed between the rudder blade and rudder housing.
- 11.5. Shims may be installed between rudder pins, gudgeons and castings.
- 11.6. Tiller crossbar.
- 11.6.1. May be adjustable length.
- 11.6.2. May be placed on the top or bottom of the rudder arm connectors.
- 11.6.3. Any style tiller connection is allowed.

- 11.7. Rudder arms must be as supplied by Mystere.
- 11.8. Tiller extensions, Hiking sticks, are allowed. There are no restrictions on materials, manufacture, or method of attachment of hiking sticks.
12. Spars must be as supplied by Mystere.
 - 12.1. No mast rotation devices are permitted. The halyard will be used only for lowering and raising the sail.
 - 12.2. Boom -- No booms will be allowed.
 - 12.3. Bow Compression Strut -- The bow compression strut is optional. It may be removed (if factory equipped with such) or added (if not factory equipped with such). It may be replaced with a 'similar' strut. The strut may be made of any material. The strut may be of any cross section. The intended purpose of the strut will be to take compression loading between the two bows as the bridle wires pull them inwards.
13. Trampoline
 - 13.1. Trampolines may be manufactured by anyone.
 - 13.2. Trampolines must attach to the hulls and crossbars in the same configuration as supplied by the manufacturer.
 - 13.3. Pockets, hiking straps, grommets, attachment points for equipment may be added or removed.
 - 13.4. Any material may be used provided safety is not compromised.
 - 13.5. Mainsheet keepers may be installed on the trampoline.
 - 13.6. Hiking straps may be padded. Hiking straps will not be adjustable while racing.
14. Sails
 - 14.1. The Mystere 4.3 is a spinnaker rigged sloop, meaning mainsail, jib, & spinnaker. Sails may be removed.
 - 14.2. Sails may be manufactured by any sailmaker and must measure in accordance with the specifications at the end of this section. (See Measurement Information) Mystere manufactured sails built before August 18, 2001 will be class legal without measurement. Mystere. sails built after August 18, 2001 will be measured via a measurement template using the class measurements.
 - 14.3. Sail Measurement Information --Mystere 4.3 Sail Plan* and Measurements:
 - 14.3.1. Mainsail
 - 14.3.1.1. Mainsail measurements (See Figure 1)
 - Luff **: 22' 0" - 264"
 - Leech : 21' 9" - 261"
 - Foot *** : 5' 9" - 69"
 - Girth Measurement Area Dimensions in Inches
 - 1/8: 34"
 - 1/4: 51"
 - 1/2: 66"
 - 3/4: 70"
 - Foot: 69"
 - 14.3.1.2. To Measure the Mainsail Luff, Leech, & Foot
 - pull Luff to get wrinkles out
 - Measure Luff (edge of cloth to edge of cloth from Head to Tack)
 - Pull Leech to get wrinkles out
 - Measure Leech (edge of cloth to edge of cloth from Head to Clew)

- Pull foot to get wrinkles out
- Measure Foot (edge of cloth to edge of cloth from Tack to Clew)
- 14.3.1.3. To Determine and Measure Mainsail Girths
 - Fold Head to Tack and mark Center of Luff (on bolt rope)
 - Fold Head to Clew and mark Center of Leech (on cloth edge at Leech)
 - Fold Center of Luff to Tack to mark 3/4 of Luff (on bolt rope)
 - Fold Center of Leech to Clew to mark 3/4 of Leech (on cloth edge at Leech)
 - Fold Center of Luff to Head to mark 1/4 of Luff (on bolt rope)
 - Fold Center of Leech to Head to mark 1/4 of Leech (on cloth edge at Leech)
 - Fold Head to 1/4 Mark on Luff to mark 1/8 of Luff (on bolt rope)
 - Fold Head to 1/4 Mark on Leech to mark 1/8 of Leech (on cloth edge at Leech)
 - Measure each girth, being sure there are no wrinkles
- 14.3.1.4. All measurements include the boltrope
 - **The Luff shall be the highest point of the sail and no material shall exceed square to the leading edge of the sail.
 - ***The foot is defined as a straight line from the bottom of the Luff to the bottom of the Leech and no material shall be allowed below that straight line except for a 3" allowance of material.
- 14.3.2. Jib
 - 14.3.2.1. Jib Measurements
 - Luff: 14' 6" - 174"
 - Leech: 14' - 168"
 - Foot: 3' 10" - 46"
 - 14.3.2.2. To Measure the Jib Luff, Leech, & Foot
 - If the jib is "zipped on" close the zipper.
 - Pull Luff to get wrinkles out
 - Measure Luff (edge of cloth to edge of cloth from Head to Tack)
 - Pull Leech to get wrinkles out
 - Measure Leech (edge of cloth to edge of cloth from Head to Clew)
 - Pull foot to get wrinkles out
 - Measure Foot (edge of cloth to edge of cloth from Tack to Clew)
 - 14.3.2.3. The Leech of the jib shall be straight or concave in curve.
- 14.3.3. Spinnaker
 - 14.3.3.1. Spinnaker Measurements
 - Luff: 21'11" - 263"
 - Leech: 19'7" - 235"
 - Foot: 11'2" - 134"
 - 14.3.3.2. To Measure the Spinnaker Luff, Leech, & Foot
 - Pull Luff to get wrinkles out
 - Measure Luff (edge of cloth to edge of cloth from Head to Tack)
 - Pull Leech to get wrinkles out
 - Measure Leech (edge of cloth to edge of cloth from Head to Clew)
 - Pull foot to get wrinkles out
 - Measure Foot (edge of cloth to edge of cloth from Tack to Clew)
- 14.4. A Sailor may not change sails during a race or regatta unless the sail has been dam-

Figure 1



To determine Girths:

- 1) Fold Head to Tack to find center of luff
- 2) Fold Head to Clew to find center of leech
- 3) Continue folding mark from luff and leech to find remaining Girths

aged and is no longer usable. Permission to make a sail change must be received, in writing from the race committee PRIOR to the change being made, if possible. If a change is made without prior written RC approval, the RC may approve the changes after the fact and must post their decision in writing.

- 14.5. Any sail batten material is allowed.
- 14.6. Sail reinforcement is permitted.
- 14.7. Telltales are permitted on the sail.
- 14.8. Mainsail
 - 14.8.1. All mainsails shall have the Mystere "M" registered trademark logo, which is the class insignia.
 - 14.8.2. A leech and foot line is permitted on the mainsail.
 - 14.8.3. The bottom batten will not be made of a material that can be construed as a boom
 - 14.8.4. The point of attachment of mainsheet shall not be on a sliding track.
- 14.9. Jib
 - 14.9.1. A leech line is permitted on the jib.
 - 14.9.2. The jib may not use any battens
 - 14.9.3. The jib may hank or zip onto the forestay
 - 14.9.4. The jib may have a rope or wire in the luff.
 - 14.9.5. The jib may roller furl.
- 14.10. Spinnaker
 - 14.10.1. Spinnaker poles may include "snuffers", "snails", or similar spinnaker retrieval devices.
 - 14.10.2. Distance from front of main beam to Spinnaker tack must be less than 114 inches.
- 15. Standing Rigging/Wires
 - 15.1. The minimum wire size is 3/32 inch . The wire may be increased in size.
 - 15.2. Standing rigging lengths may be altered.
 - 15.3. Bridle wire lengths may be altered
 - 15.4. Mechanism for attaching the standing rigging may be changed, so long as strength is not reduced and Mystere supplied mast and hull fittings are not changed.
 - 15.5. Standing rigging may not be adjusted while racing.
- 16. Running rigging
 - 16.1. All running rigging may be rigged as desired. This includes block location, style and purchase.
 - 16.2. This includes the main sheet, main halyard, main traveler, downhaul, jib sheets, jib halyard, jib furler, spinnaker sheet, tack line, halyard, and retrieval lines.
 - 16.3. No additional sail controls are permitted. (examples: Boom Vang, Jib barber hauler).
- 17. Equipment
 - 17.1. Trapeze
 - 17.1.1. 2 trapeze per side are permitted.
 - 17.1.2. Height adjustment mechanisms are permitted
 - 17.1.3. Trapeze handles, hooks, loops may be changed, but must provide quick release.
 - 17.1.4. Location, return shock cords, fairleads may be added/changed.

- 17.2. Any wind indicator is allowed.
 - 17.3. Electronic or mechanical Compasses and other aids to navigation are allowed, including weather instrumentation and electronic instruments.
 - 17.4. Tape or Covers are allowed over any parts (for example chainplates).
 - 17.5. Additional safety lines may be added.
 - 17.6. Radios can be onboard but may not be used for coaching or for providing or receiving competitive advice to or from any racing M4.3. Monitoring of Race Committee communications or weather information is permissible.
18. Advertising
- 18.1. Advertising on the boat and sails is allowed per ISAF Advertising Code, Regulation 20.
 - 18.2. The ISAF advertising category is “A” (which means not much advertising).
 - 18.3. A boat displaying advertising left over from some previous event for which the owner and competitors received no direct compensation will be permitted. The intent of this rule is to permit a boat to compete if the owner bought it secondhand from a resort which painted its name on it, but prevent the selling of advertising space as a means of generating income.
19. Racing Numbers
- 19.1. Upon receipt of the membership application form and fee, NAM4.3CA will assign an official sail number. Sail numbers may be requested on first come, first served basis. Otherwise they will be issued in sequence.
20. Number of crew
- 20.1. Any number of crew may race provided that no change is made during the race event. If a crew change is required, it must be made only with the written permission of the PRO. In the event prior approval was not obtained, if there are objections to the crew change, a hearing will be called to decide if the change is acceptable. The intent of this rule is to accommodate schedule conflicts of crew members, sharing of the fun, and children’s short attention spans and limited strength, while preventing picking the best crew for the weather of the moment.
 - 20.2. There is no class minimum or maximum crew weight.